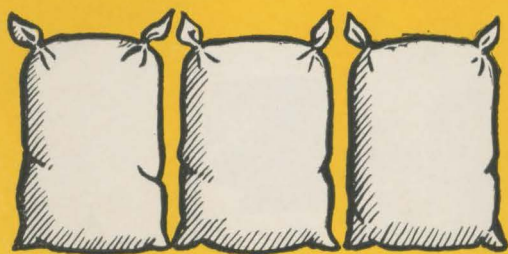


**GRAIN
ELEVATING**

**BY
ELECTRICITY**

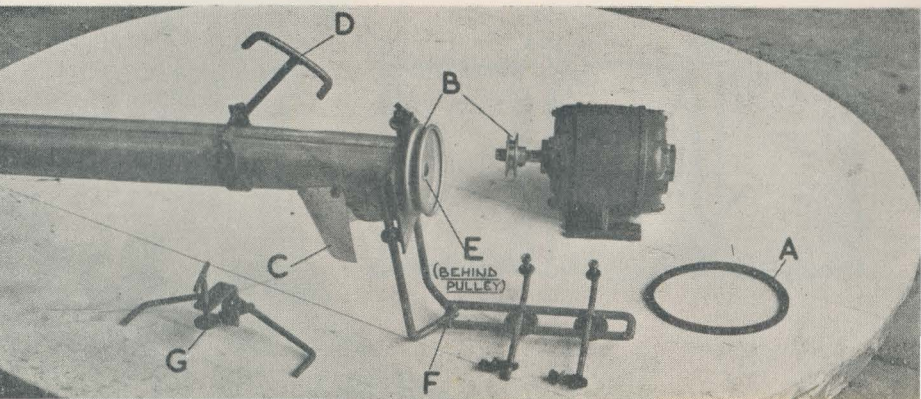


H A N D L I N G G R A I N I N B U L K

The Auger Elevator is a machine designed to handle grain in bulk. It may be used to lift grain from one level to a higher one or to move it from one point to another on the same level, to turn grain or to bag off grain stowed in a pile. Where a grain drier is installed the auger elevator may be used to fill and empty the drying tray with very little light labour. If grain is in sacks they may be tipped into a barrel, box or hopper and the auger will then transfer the grain to the desired location. The auger will then transfer the grain to the desired location. The auger, of course, can only move grain in a straight line as, because of its nature, it cannot be made to curve round a bend.

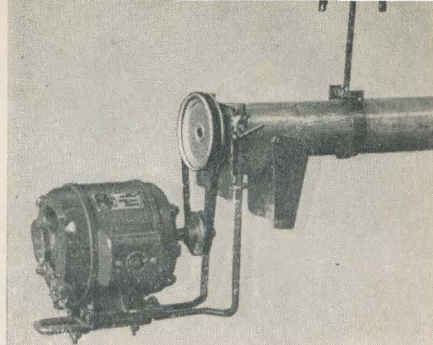
METHOD OF OPERATION AND ASSEMBLY

The electric grain auger-type elevator consists of a galvanised steel tube, inside which an auger rotates. The tube is $3\frac{1}{2}$ " in diameter and 16 ft. long and the auger is rotated by means of a $\frac{1}{3}$ rd h.p. electric motor. In the photograph below the complete assembly can be seen. It includes (A) belt, (B) pulleys, (C) spout, (D) hanger hook, (E) ball-bearing head and (F) adjustable mount for the motor.



MOTOR MOUNTING

The auger protrudes for a short distance at the intake end and this protruding portion should be always submerged in grain for efficient operation. The motor is mounted at the outlet end and it may be mounted either above or below the auger tube, the latter generally being more convenient. The auger may be suspended from a beam or rafter by means of the hanger hook or may be clamped to the side of a bin or truck by



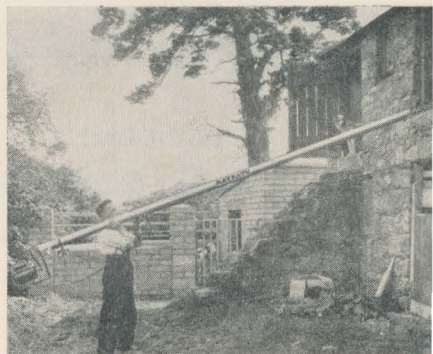
means of the truck bracket. The complete assembly is extremely light and may be easily transported from one location to another and may be used in all positions from horizontal to vertical.

SAVE TIME AND LABOUR

With the advent of the combine harvester the problem of handling grain is of paramount importance. Where grain is to be stored on loft a considerable amount of time and labour was required to get the grain from ground level to loft level. This can now be done quickly and economically by means of the auger elevator. The $3\frac{1}{2}$ " auger has an output of up to 15 tons per hour, but on test, when driven by a $\frac{1}{3}$ rd h.p. motor, we have found that grain can be elevated from sacks tipped into a barrel or box at the rate of five tons per hour. The amount of electricity used in this time would be less than $\frac{1}{3}$ rd of a unit, so that the cost of lifting grain to a height of about 15 feet works out at approximately 15 tons per unit. The cost of a 16 ft. elevator complete with $\frac{1}{3}$ rd h.p. motor is only £21.

SWIVEL FITTING

If required, a 2' long swivel spout may be obtained and attached to the discharge end of the auger. This enables grain to be distributed over a wider area.



THESE ARE THE ADVANTAGES OF ELECTRIC GRAIN LIFTING

The auger is light in weight.

It can be moved from place to place without difficulty.

It will lift 15 tons of grain 15' for only one unit of electricity.

It is efficient in use and requires little or no maintenance or attention.

It saves a considerable amount of money and time in labour.

THE ELECTRIC GRAIN AUGER ELEVATOR

16' model complete with all fittings and 1/3rd h.p. electric motor, £21-0-0.

Without motor, £11-10-0.

Prices of 11' and 21' length on application.

Larger augers suitable for operation with 1 h.p. motor are also available.

2' swivel spout available at £2-17-6.

**ELECTRICITY SUPPLY BOARD
RURAL ELECTRIFICATION OFFICE
27 LR. FITZWILLIAM STREET, DUBLIN**